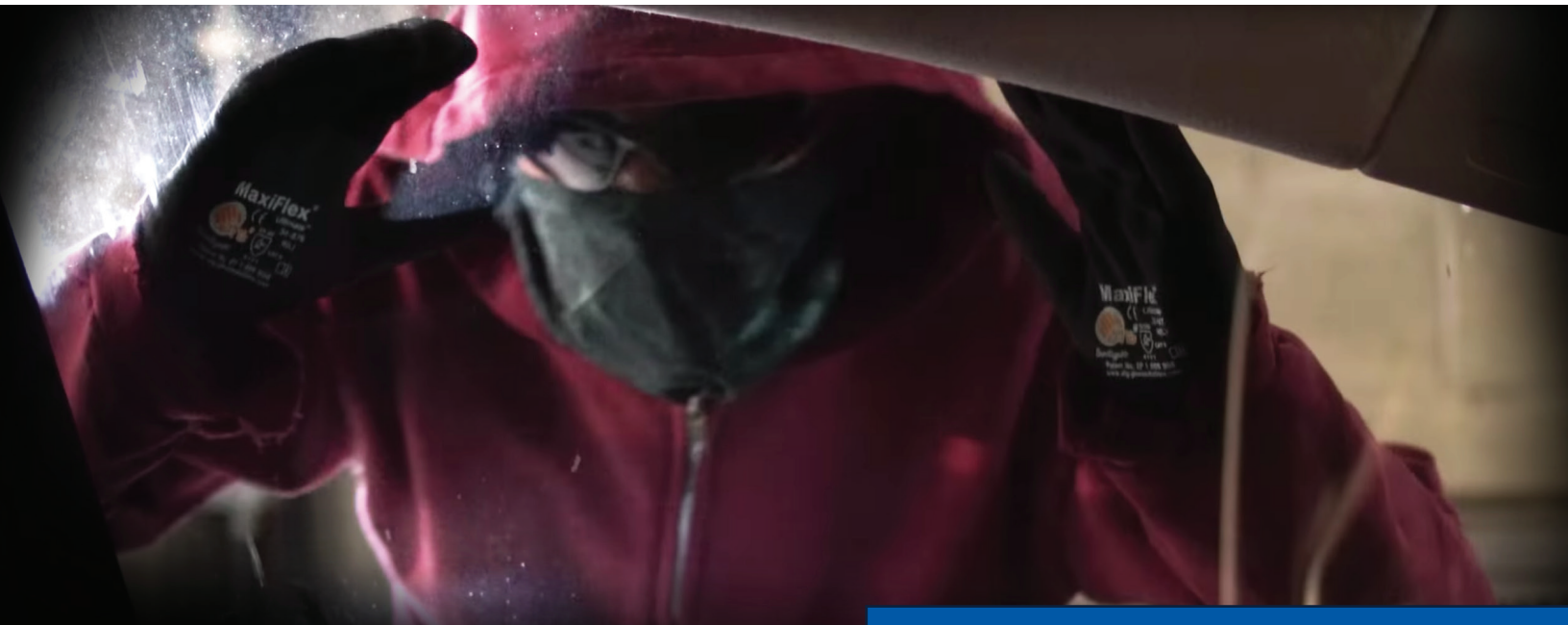




SPD Crime Prevention

Preventing Car Prowls



For more tips visit
seattle.gov/preventcarprowls

KEY TIP:
**Do not leave any valuables
in plain sight.**

- Keep thieves out of secure parking garages by ensuring doors fully close behind you.
- Remove or hide anything that a car prowler might mistake as something worth stealing.
- If valuables must be left behind, hide them out of sight several blocks away before parking.
- Remote controls for garages should never be left inside parked vehicles.
- If you park on the street, choose a well-lit, open space.

If your vehicle is broken into:

File a report by calling the non-emergency number at 206-625-5011,
or file one online at: www.seattle.gov/police/report/

When filing a report on-line or over the phone you do not need to remain at the scene. If you choose to call the non-emergency line, simply ask to report a crime and, if it meets the criteria, the call-taker will forward you to an officer who will take your report over the phone. The officer will still provide you with a case number. **If the crime is still in progress or it is an emergency situation, call 9-1-1 immediately!**